



Recommended **MINERAL CHEEK COLORS** Ivory Skin Tone



Sunny Spice



Pink Petals



Shy Blush



Strawberry Cream



Sparkling Cider *



Cherry Blossom * †

† Recommended only for Ivory 202

* Recommended only for Ivory 200 and 202

Recommended **Mineral Bronzing Powder**



Sandstone



Desert Sun **

** Recommended only for Ivory 200 and 202



Recommended MINERAL CHEEK COLORS

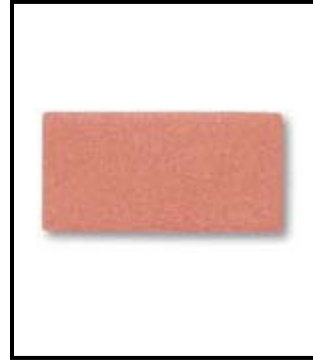
Beige Skin Tone



Sunny Spice *



Pink Petals †



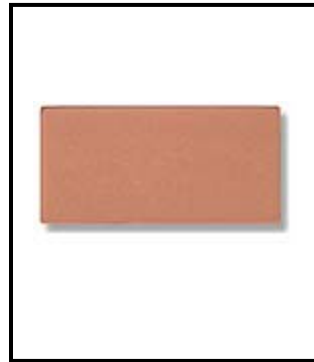
Shy Blush



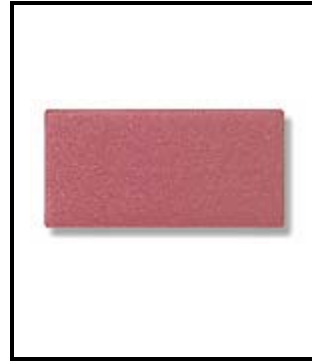
Strawberry Cream



Cherry Blossom



Sparkling Cider **



Bold Berry ◇



Golden Copper ◇

* Not recommended for Beige 302, 400, 402, and 404

† Not recommended for Beige 302, 400, and 402

** Not recommended for Beige 304 and 305

◇ Recommended only for Beige 402

Recommended Mineral Bronzing Powder



Sandstone §



Desert Sun



Bronze Diva ***

§ Not recommended for Beige 402

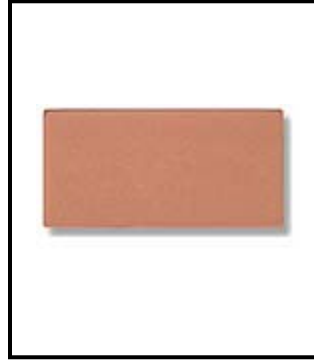
*** Not recommended for Beige 304 and 305



Recommended **MINERAL CHEEK COLORS** Bronze Skin Tone



Strawberry Cream*



Sparkling Cider †



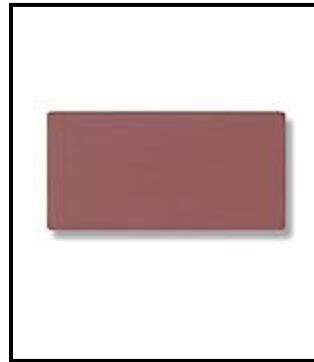
Bold Berry



Golden Copper



Cinnamon Stick



Berry Brown **

* Recommended for Bronze 500, 504, and 507

† Recommended for Bronze 500 and 504

** Not recommended for Bronze 500, 504, or 507

Recommended **Mineral Bronzing Powder**



Desert Sun



Bronze Diva **



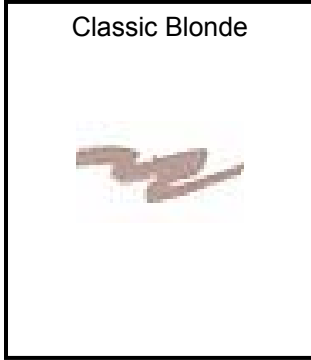
Canyon Gold

** Recommended only for
Bronze 500, 504, and 507

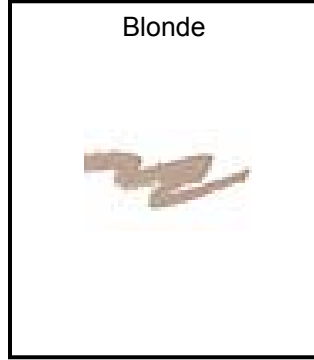


Recommended EYEBROW PENCILS

Hair Color



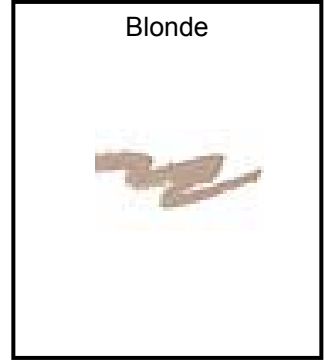
Light Blonde/Blonde



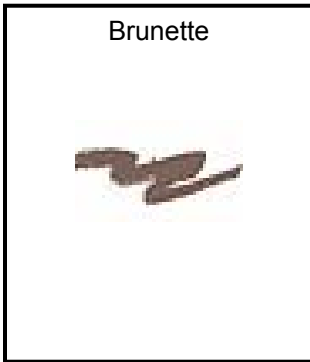
Medium/Dark Blonde



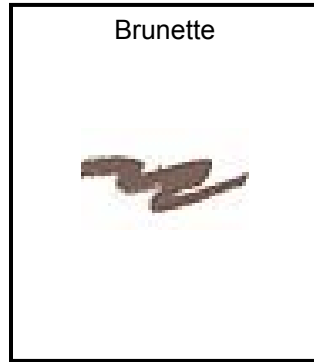
Auburn



Light Brown



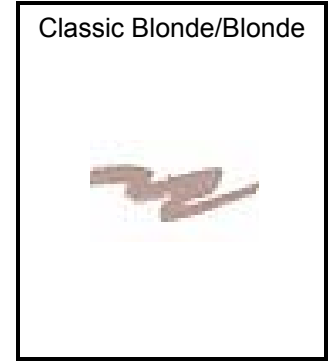
Brown/Medium Brown



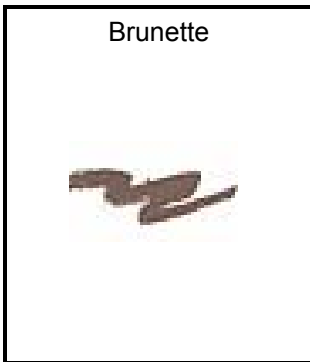
Dark Brown



Very Dark Brown/Black



Gray (Ivory/Beige)



Gray (Bronze/Ebony)